



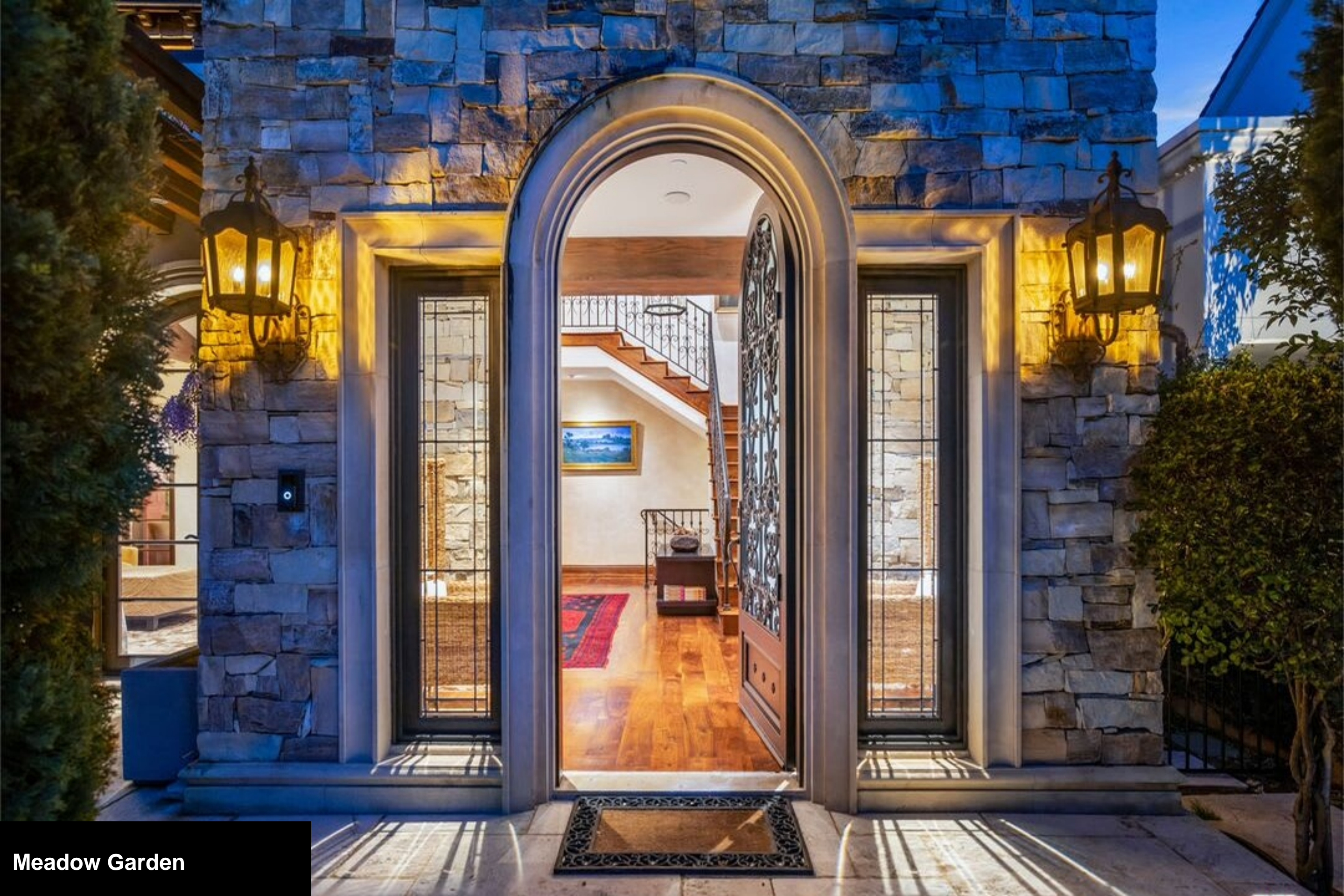
Meadow Garden

8
Bedrooms

9
Bathrooms

7,354
Living Area

7,354
Lot Area



Meadow Garden

Meadow Garden

Welcome to 506 Palisades Ave, an elegant Tuscan retreat ideally situated a short stroll to Montana Ave's shops & dining and world class beaches. Beyond privacy hedges and lush grounds, enter the home and appreciate old-world craftsmanship & materials such as custom stone & wood work, beamed ceilings, arched doorways, and detailed built-ins, molding and trim. A double-height foyer connects to grand living spaces including a spacious living room with vaulted ceiling, formal dining room, stately home office, and comfortable family room. The chef's kitchen with island and breakfast room walk out to a peaceful garden, dining terrace with built-in BBQ, and saltwater pool & spa with waterfall. Upstairs a luxe primary suite boasts two walk-in closets, fireplace, and a spa-like bathroom. The basement level exudes sophistication and style, featuring an entertaining lounge with wet bar accentuated by wine racks, fireplace, and ceilings adorned in brick. Enjoy your favorite film in the plush theatre with recliner seating for eight. With seven bedrooms in the main residence plus a charming detached guest house, your family and visitors are afforded complete comfort and privacy. The finest lease offering available in Santa Monica. Quoted price is for 1+ year, unfurnished. Also available furnished and/or short-term at increased rates.

Interior

Total bedrooms	8
Total bathrooms	9
Full bathrooms	9

Area & Lot

Living area	7,354sq.ft.
Lot area	7,354sq.ft.
Year built	2008
Neighborhood	The beach cities
Architecture styles	Contemporary
View description	No

Exterior

Stories	3
Parking	2

Financial

Price upon request	
--------------------	--



Meadow Garden



Meadow Garden



Meadow Garden



Meadow Garden



Meadow Garden



Meadow Garden



Meadow Garden



Meadow Garden



Meadow Garden



Meadow Garden



Meadow Garden



Meadow Garden



Meadow Garden



Meadow Garden



Meadow Garden



Meadow Garden



Meadow Garden



Meadow Garden



Meadow Garden



Meadow Garden



Meadow Garden



Meadow Garden



Meadow Garden



Meadow Garden



Meadow Garden



Meadow Garden





Meadow Garden



Meadow Garden



Meadow Garden

Broker and broker's agents do not represent or guarantee accuracy of the square footage, bedroom/bathroom count, lot size/dimensions, permitted or unpermitted spaces, or other information concerning the conditions or features of the property. Buyer is advised to independently verify the accuracy of all information through personal inspection, building permits and/or with appropriate professionals (i.e., attorney, appraiser, architect, contractor, etc.) to satisfy themselves & rely only on that. There may be issues under furnishings, rugs, holes in the walls from attached fixtures that are not revealed in the physical inspection. Agent is not aware of same. Agent is unaware of exact property lines. The only way to determine property lines is by relying on the results of a survey from a qualified professional.

506 PALISADES AVENUE

SANTA MONICA, CA 90402



**MAIN RESIDENCE
MAIN LEVEL**
2,621 SQ FT



**MAIN RESIDENCE
UPPER LEVEL**
2,060 SQ FT

**Total Finished
Square Footage: 7,354 SQ FT**
Above-Grade: 4,940 SQ FT Below-Grade: 2,414 SQ FT

• **Main Residence: 7,095 SQ FT**

- Main Level: 2,621 SQ FT
- Upper Level: 2,060 SQ FT
- Lower Level: 2,414 SQ FT

• **Guest House: 259 SQ FT**

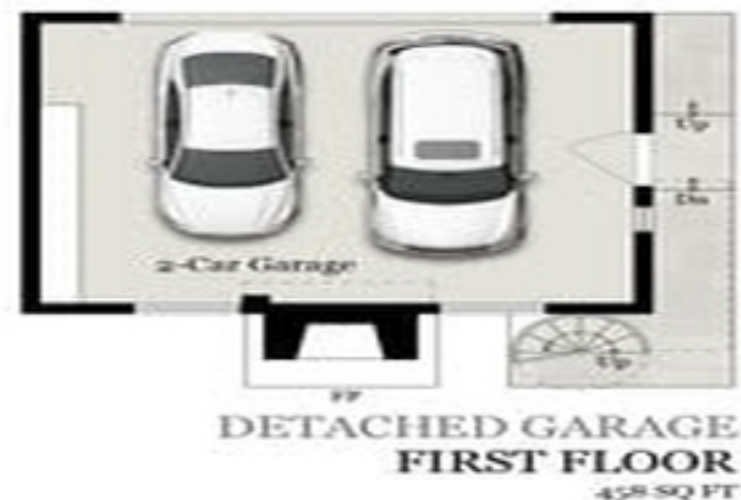
Plus 458 SQ FT Detached 2-Car Garage
Plus 82 SQ FT Mech. Rooms (Main Residence-Lower Level)
Plus 27 SQ FT Storage (Main Residence-Lower Level)
Calculated per ANSI Standard Z390-2007

* Total Finished & Unfinished Square Footage: 7,921 SQ FT

Broker and broker's agents do not represent or guarantee accuracy of the square footage, bedroom/bathroom count, lot size/dimensions, permitted or unpermitted spaces, or other information concerning the conditions or features of the property. Buyer is advised to independently verify the accuracy of all information through personal inspection, building permits and/or with appropriate professionals (i.e. attorney, appraiser, architect, contractor, etc.) to satisfy themselves & rely only on that. There may be issues under furnishings, rugs, holes in the walls from attached fixtures that are not revealed in the physical inspection. Agent is not aware of same. Agent is unaware of exact property lines. The only way to determine property lines is by relying on the results of a survey from a qualified professional.

506 PALISADES AVENUE

SANTA MONICA, CA 90402



Broker and broker's agents do not represent or guarantee accuracy of the square footage, bedroom/bathroom count, lot size/dimensions, permitted or unpermitted spaces, or other information concerning the conditions or features of the property. Buyer is advised to independently verify the accuracy of all information through personal inspection, building permits and/or with appropriate professionals (i.e., attorney, appraiser, architect, contractor, etc.) to satisfy themselves & rely only on that. There may be issues under furnishings, mugs, holes in the walls from attached fixtures that are not revealed in the physical inspection. Agent is not aware of same. Agent is unaware of exact property lines. The only way to determine property lines is by relying on the results of a survey from a qualified professional.

506 PALISADES AVENUE

SANTA MONICA, CA 90402

SITE PLAN



